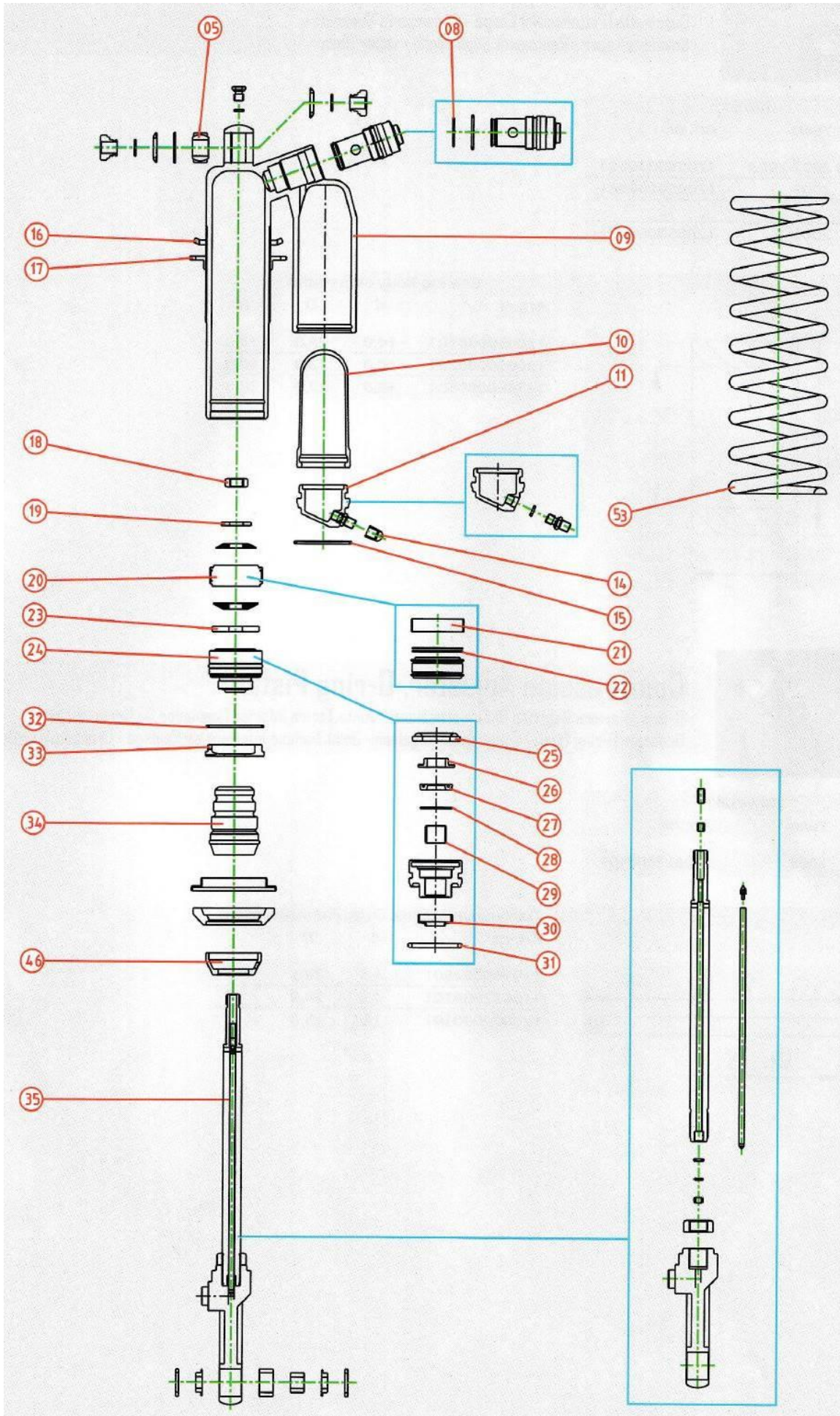


# Road Shock



- 5 bearing body
- 8 compression adjuster o-ring piston
- 9 shockbody
- 10 bladder
- 11 gas tank cap complete
- 14 valve cap
- 15 stop ring tank
- 16 nut for spring top
- 17 nut for spring bottom
- 18 lock nut
- 19 washer next to lock nut
- 20 piston complete
- 21 piston ring
- 22 piston o-ring
- 23 support washer piston rod
- 24 seal head complete
- 25 bump rubber seal head
- 26 washer seal head large / oil lock
- 27 oil seal
- 28 washer seal head small
- 29 bush
- 30 dust seal
- 31 o-ring seal head
- 32 stop ring body
- 33 cap of shockbody
- 34 bump rubber
- 35 piston rod complete
- 46 bump rubber holder
- 53 shock spring