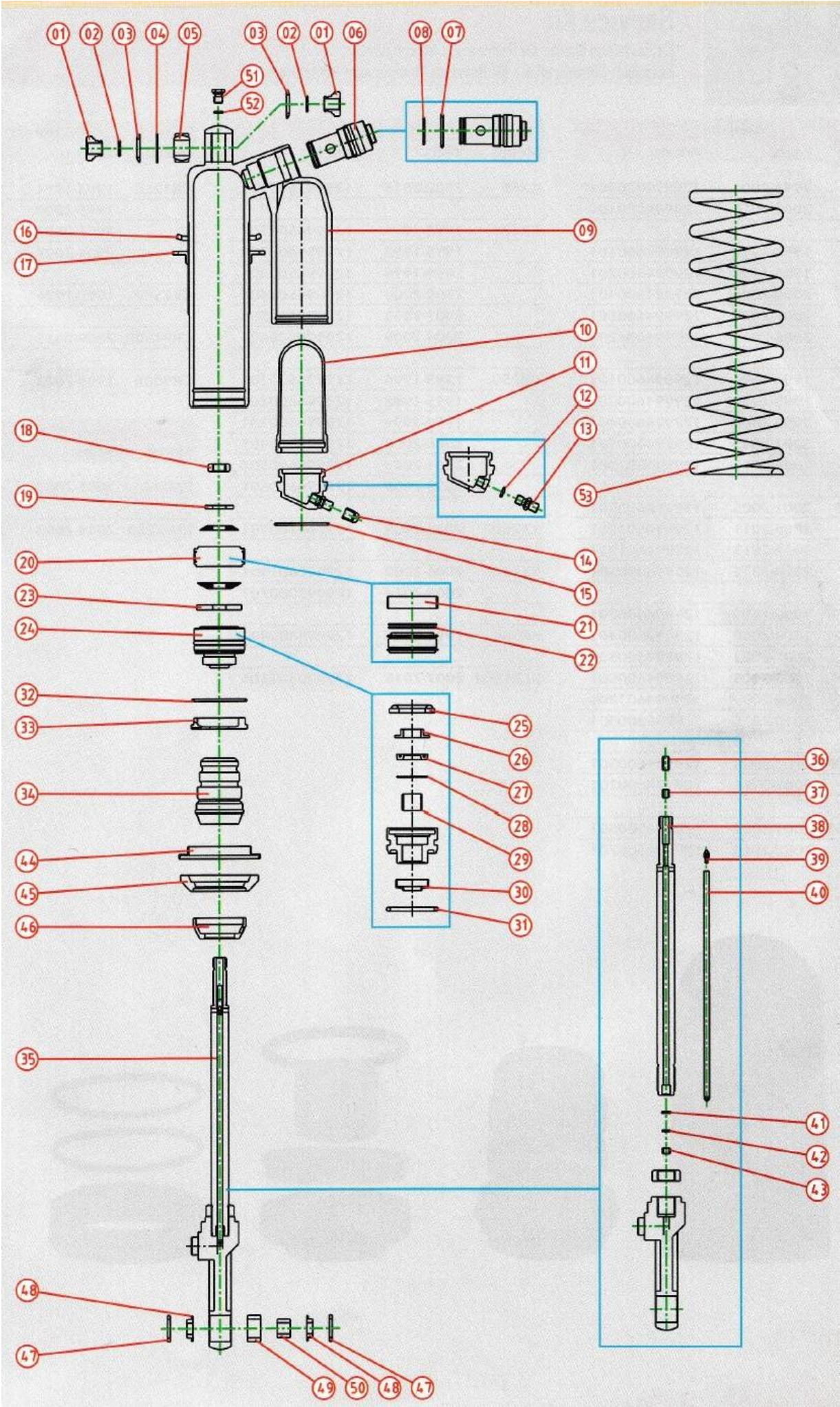


Off Road Shock Absorber



- 1 bearing body collar
- 2 bearing body o-ring
- 3 bearing body dust seal
- 4 bearing body stop ring
- 5 bearing body
- 6 compression adjuster complete
- 7 compression adjuster o-ring body
- 8 compression adjuster o-ring piston
- 9 shockbody
- 10 bladder
- 11 gas tank cap complete
- 12 air valve o-ring
- 13 air valve comp with o-ring
- 14 valve cap
- 14.1 factory valve cap special
- 15 stop ring tank
- 16 nut for spring top
- 17 nut for spring bottom
- 18 lock nut
- 19 washer next to lock nut
- 20 piston complete
- 21 piston ring
- 22 piston o-ring
- 23 support washer piston rod
- 24 seal head complete
- 25 bump rubber seal head
- 26 washer seal head large / oil lock
- 27 oil seal
- 28 washer bearing small
- 29 bush
- 30 dust seal
- 31 o-ring seal head
- 32 stop ring body
- 33 cap of shockbody
- 34 bump rubber
- 35 piston rod complete
- 36 piston rod inside, clip pen
- 37 piston rod inside, needle guide
- 38 piston rod
- 39 needle piston rod inside
- 40 alu pipe piston rod inside
- 41 o-ring piston rod inside
- 42 spacer piston rod inside
- 43 bush piston rod inside
- 44 spring seat steel
- 45 spacer alu
- 46 bump rubber holder
- 47 dust seal bearing piston rod complete
- 48 collar bearing piston rod complete
- 49 bearing piston rod complete
- 50 bush bearing piston rod complete
- 51 drain bolt
- 52 drain bolt o-ring
- 53 shock spring